

PERSONAL
CHILLER®

SOFT NUGGET ICE MAKER

Model K3026SS

USER GUIDE



SOFT NUGGET ICE MAKER



INTRODUCTION

Congratulations on your purchase of a restaurant-style soft, chewable ice maker for your home with no installation or water hookup required. Unlike hard ice cubes and shapes, soft chewable ice is made by scraping the ice flakes off the inside of a chilled stainless-steel cylinder, then compacted into light, airy nuggets. It is not crushed ice or shaved ice, it the perfect small pellet ice for crunching and munching!

Your Personal Chiller Soft Nugget Ice Maker is desired by soft ice lovers everywhere with ice made fast and ready anytime for personal enjoyment or entertaining guests. The low-profile stainless-steel design complements any kitchen or bar area and fits under most standard sized cabinets. Simply fill the water reservoir and press the button to make magical ice within ten minutes! Ice is always fresh and consistently soft without any refrigerator or freezer odors. Soft nugget ice enhances the exquisite taste of cocktails, soft drinks, iced coffees and teas, or just plain water. Cheers to Soft Nugget Ice!

READ ALL INSTRUCTIONS BEFORE USE

For your safety and continued enjoyment of this product, please read the instruction manual before using.



IMPORTANT:

LET THE UNIT REST AND REMAIN UNPLUGGED FOR 24 HOURS BEFORE USE.

SAFETY PRECAUTIONS



Use a grounded
3-prong outlet only



Ensure 4" clearance from rear
of unit when placed against wall



Keep hands and objects
clear of ice outlet



No Sharp Knife
to Unpack



Indoor Use Only



No location near
heat/sunlight



Distilled, or Purified
water recommended



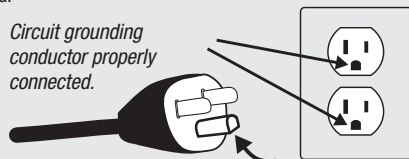
2 People Recommended
for lifting



Extension cord
NOT recommended

SAFETY INSTRUCTIONS

- Do not, under any circumstances, alter or remove the third (ground) prong from the power cord. **For personal safety, this product must be properly grounded.**
- Do not exceed power outlet ratings. It is recommended that the ice maker is connected to its own circuit. Use only a 120V, 60Hz standard electrical supply that is properly grounded in accordance with the National Electric Code and local codes and ordinances.
- Due to potential safety hazards under certain conditions, we strongly advise against the use of an adapter or an extension cord.
- Do not under any circumstances cut or remove the third ground prong from the power cord.



- Do not unplug the appliance by pulling the power cord. To properly disconnect the unit, grip the plug firmly and pull it straight out from the wall outlet.
- To protect against electrical shock do not immerse appliance plug or cord into water or other liquids.
- This product must be properly installed and located in accordance with the installation instructions before it is used. Product is for indoor household use only.
- Do not use outdoors. Do not store or use flammable vapors or liquids near this product.



ATTENTION! Some types of under-cabinet lamps can be hot enough to cause damage to your machine top's appearance.

- This appliance is not a toy. Exercise caution and supervision when this appliance is used near children.
- Do not allow children to operate the unit.
- Keep fingers away from ice dispenser and bin area while operating.
- Do not use with tap water, or water that is not distilled, or is unsafe to drink, or of unknown quality, or any other kind of liquid, only water.
- Place power cord in such a way that it cannot be pulled on by children or cause a tripping hazard.
- Place power cord in such a way that it is not in contact with hot surfaces.
- Do not operate if any component, including the cord or plug, is damaged.
- Unplug the product before cleaning and when not in use.
- Do not immerse any part of the product in water.
- Do not plug or unplug product with wet hands.
- Do not attempt to disassemble, repair, modify, or replace any part of your product.
- Use this product only for its intended purpose as described in this user manual.
- Do not use any accessories not recommended by the manufacturer.



CAUTION

To reduce the risk of injury when using machine, follow the basic safety precautions:

- Do not remove any safety, warning, or product information labels from your ice maker.
 - Lifting Hazard: It is recommended to have two people move and install the ice maker in order to prevent injury.
 - Unplug the appliance before any cleaning or maintenance.
 - Do not clean the appliance with flammable fluids or solvent-based cleaning agents.
 - Do not use abrasive cleansers on the interior or exterior surfaces as they could damage or scratch the unit.
 - When disposing of refrigeration appliances, special handling is required. Check federal and local regulations before disposing this product.
 - Do not operate the appliance with wet hands or while standing on wet surface or in standing water.
- Chemical Hazard— when cleaning with bleach, use bleach in a well-ventilated area and avoid mixing bleach with other household cleaners.
 - To clean the ice bin, remove the bin from the ice maker and clean inside and outside with a soft cloth.
 - DANGER –Risk Of Fire or Explosion. Flammable Refrigerant Used.
 - Do Not Use Mechanical Devices To Defrost Ice Maker.
 - Do Not Puncture Refrigerant Tubing.
 - To minimize the risk of possible ignition due to incorrect parts or improper service, component parts shall be replaced with like components and that servicing shall be done by factory authorized service personnel.

Child Entrapment Warning: DANGER or WARNING: Risk of child entrapment. The appliance is not intended for use by young children or infirm persons without supervision. Young children should be supervised to ensure that they do not play with the appliance.

CAUTION: the ice maker is to be installed in accordance with the Safety Standard for Refrigeration Systems, ASHRAE 15 and shall not be installed in corridors or hallways of public buildings.



DANGER! Risk of fire or explosion due to puncture of refrigerant tubing; Follow handling instructions carefully. Flammable refrigerant used.



WARNING



CUT HAZARD
Keep hands
clear of blade.

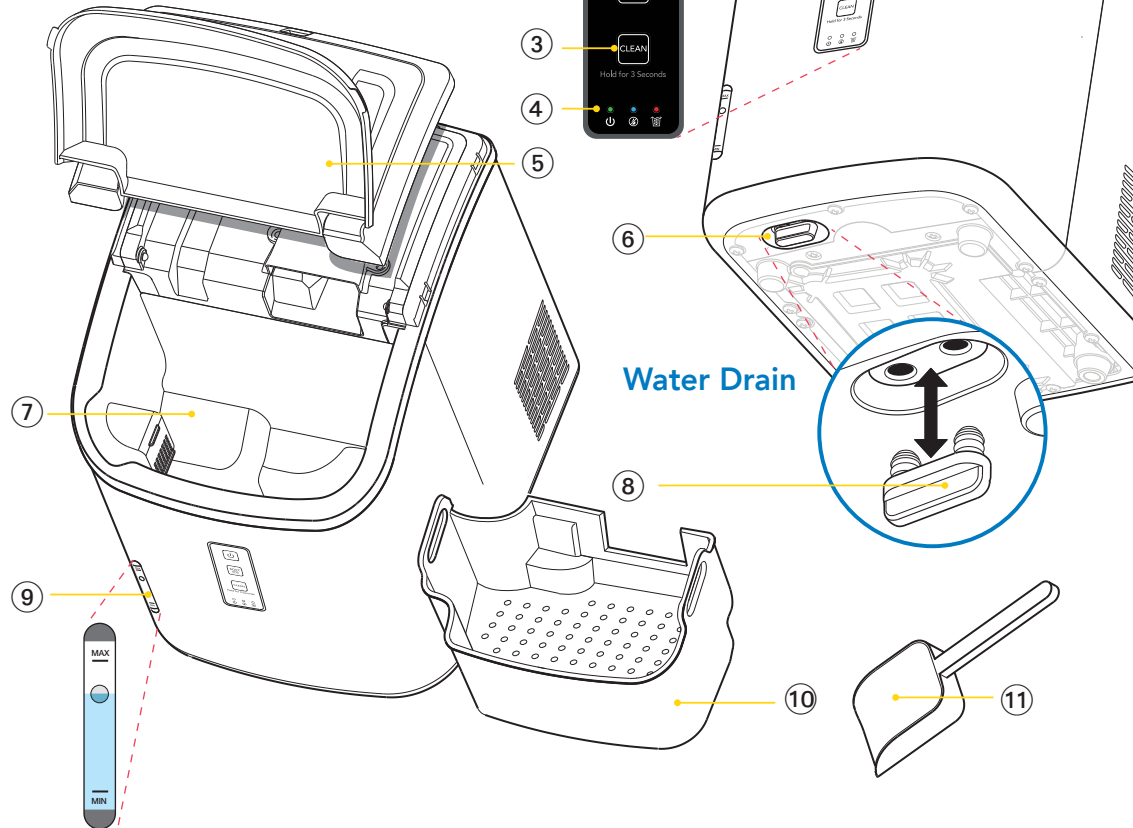
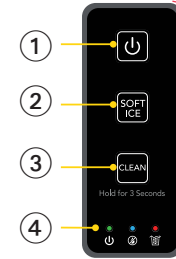
What's Inside

Personal Chiller Soft Nugget Ice Maker,
Ice Bin, Ice Scoop, Quick Start Guide,
User Guide and Customer Review Card

LOCATION OF CONTROLS

- 1 Power Button:** Press button once to turn on the appliance.
- 2 Soft Ice Button:** Press button once, to start making ice.
- 3 Clean Button:** Press and hold for 3 seconds for CLEAN CYCLE
- 4 Indicator Lights**
(Power • Add Water • Ice Full)
- 5 Clear Dust Cover
- 6 Water Drain Outlet Port (*under unit*)
- 7 Water Reservoir (*inside of unit*)
- 8 Water Drain Plug
- 9 Water Fill Level Indicator
- 10 Removable Ice Bin
- 11 Ice Scooper

Control Panel



Water Drain

NOTE: Ice Scooper and Removable Ice Bin are NOT dishwasher safe—
HAND WASH ONLY.

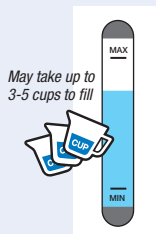
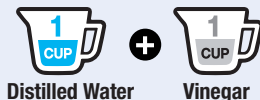
IMPORTANT!


FLUSH SYSTEM BEFORE FIRST USE

FIRST USE

The ice maker must stand upright for 24 hours before initial use for stabilization of internal parts.

- Step 1** Fill the reservoir with a solution of white vinegar and distilled water in a 1:1 Ratio (**1 cup white vinegar + 1 cup distilled water**). It may require more to achieve a level between MIN and MAX markings on the water level indicator. **DO NOT OVERFILL.**



- Step 2**  Press & hold **CLEAN CYCLE** button for 3 seconds. LED light turns off after 3 minutes when Clean Cycle is complete.
- Step 3** Unplug unit and remove drain plug from **bottom** of unit. Empty water into a sink, or bucket placed lower than the ice maker.
- Step 4** Drain water from bottom of the unit (replace drain plug).
- Step 5** Plug the unit in and repeat **Step 2** with clean, fresh water 3-4 times with draining in between each cycle. Always unplug the unit before and during the draining process.

TIP: Cleaning is recommended 1X per week if using ice maker daily, or in between uses. Some noises are common during ice making and cleaning cycles.

OPERATING INSTRUCTIONS

- Step 1** After cleaning and flushing for initial use, locate the appliance on a stable counter top or flat surface with a minimum of 4" of space all around the unit, including the back of the unit for proper ventilation. Plug unit to connect the ice maker to power outlet (120v~60Hz).
- Step 2** Fill with fresh water. Keep water to the Max Fill line on the water level indicator. **DO NOT OVERFILL.** DO NOT use any liquid except water as it will nullify the warranty. Due to water hardness in some areas, it is recommended to use Distilled or Purified Water.
- Step 3** Press the **POWER** button to turn on the appliance.
- Step 4** Press the **SOFT ICE** button to start making ice. Ice will be produced within 10 minutes and continue until the bin is full, or the reservoir requires more water. In the first 3-5 minutes it will produce crushed ice, then soft ice. It makes 1.3 lbs (600g) of ice within the first hour, then 1.7lbs. (800g) to full capacity after that.

Ice making pause sensor: If ice is not removed after ice basket is full, or inactivity after scooping ice from bin for more than 1 minute, the ice maker will stop making ice. TO RESUME ICE MAKING: Press SOFT ICE button twice (2X) to resume making ice.

WATER LEVEL Indicator: When running low on water, a blue light will start blinking. Refill the water tank, press the **SOFT ICE** button to make more ice.

ICE BIN Indicator: When the ICE BIN is FULL, the SOFT ICE button will blink for 60 seconds, and then the ICE BIN indicator will light up, and ice maker stops making ice. To RESTART press SOFT ICE button twice (2X) to continue ice making:

The first press of SOFT ICE button turns off the ICE BIN Indicator, pressing SOFT ICE button a second time begins making ice again.

IT IS RECOMMENDED TO POWER OFF THE APPLIANCE AND DRAIN THE RESERVOIR WHEN NOT IN USE, OR RELOCATING IT.

FLUSHING THE UNIT

Draining Water from Ice Maker

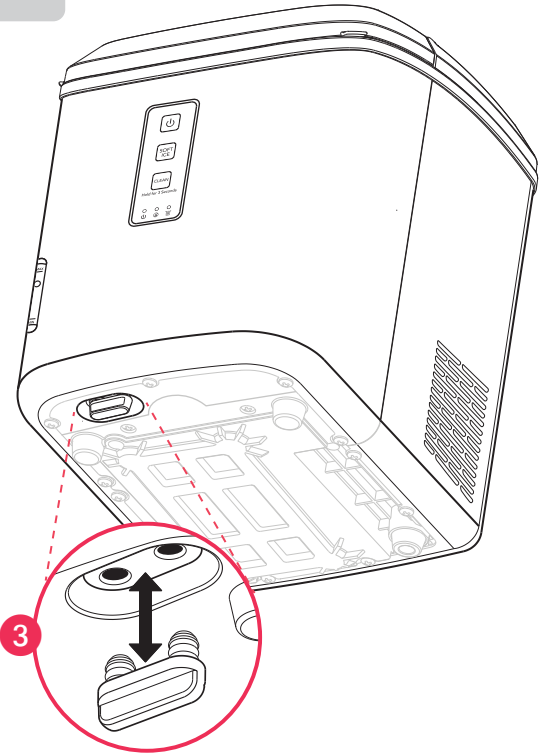
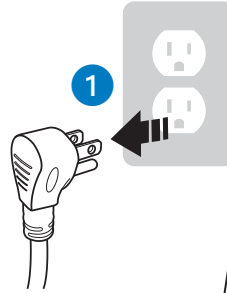
Step 1 Before flushing and draining, unplug unit.

Step 2 Place the front left edge of unit over a sink, or bucket.

Step 3 Position unit next to sink or bucket where ready to empty water into a sink, or bucket. Detach drain plug from bottom of unit when ready to empty into a sink or bucket.

Step 4 Allow the water to completely drain before re-attaching the drain plug to cover both drain holes for future use.

Step 5 When complete, plug unit back in and add fresh water (distilled) for ice-making.



CARE & CLEANING

For initial use and regular maintenance unplug this unit and follow these cleaning instructions.

- ① Wipe exterior of the ice maker and the interior of the ice bin with a soft damp cloth and wipe dry to avoid any deposits.
Do not use cleaning solvents or abrasive cleansers.
DO NOT USE SOAP IN THE WATER RESERVOIR.
- ② Create a Sanitizing Solution of **(1) cup of white vinegar and (1) cup of distilled or purified water.** Make more as needed to reach fill level between MIN and MAX. Always use a 1:1 ratio of vinegar and water. Do not leave solution in ice maker for more than 12 hours. It is only recommended when running the cleaning cycle.
- ③ Carefully pour the sanitizing solution from Step-2 into the water reservoir using the supplied funnel and add more sanitizing solution into the reservoir until just below the maximum fill level.
DO NOT OVER FILL. DO NOT EXCEED MAX FILL LEVEL.
- ④ Plug the unit back in and Press & Hold the **CLEAN CYCLE** button for 3 seconds.

- ⑤ When finished, after 3 minutes, the Clean Cycle will automatically stop and the display button will no longer be illuminated.
- ⑥ Place the front left edge of unit over a sink, or bucket.
- ⑦ Detach drain plug from bottom of unit when ready to empty into a sink or bucket.
- ⑧ **Flush the unit** with fresh water to the max fill line 3-4 times, unplugging and draining the unit for each rinse.
- ⑨ When complete, plug unit back in and add fresh water for ice-making.
- ⑩ When not in use for a period of time, make sure water is drained and interior is dry before storing.

TO ENJOY FRESH TASTING ICE EVERY DAY

- TIPS:**
- Drain and replace water daily
 - Run **CLEANING CYCLE** once per week
 - Use **VINEGAR/WATER 1:1** solution every 3-4 weeks with Cleaning Cycle
 - **DO NOT USE TAP WATER, OR ANY OTHER KIND OF LIQUID**

ICE MAKER SOUNDS

Your Personal Chiller Soft Nugget Ice Maker is not like an ordinary hard ice machine. There are several processes required to create light, airy soft-textured ice. As a result, there are sounds that are normal to this ice maker:

WHIR - When it is first turned on, you may notice the sound of the condenser fan spinning.

BUZZ - When the water pump first turns on, it may be dry and create a buzzing sound, which will dissipate when filled with water.

RATTLE - May occur from the flow of the refrigerant and will subside significantly once the system has stabilized.

GURGLE - When the refrigerant system shuts off, there may be a brief gurgle sound as the refrigerant stops flowing.

HUM - The compressor is a motor. It produces a low toned humming sound during operation

CLICK - The first nuggets produced are the loudest as they are released into the bottom of the ice bin. As the bin fills, the sound of ice dropping reduces.

TROUBLESHOOTING

OBSERVATION	POSSIBLE CAUSE	SOLUTION
"ADD WATER" indicator turns on	<ul style="list-style-type: none"> Lack of water 	<ul style="list-style-type: none"> Stop the ice maker, fill water, and press CLEAN button again to restart the unit
"ICE FULL" indicator turns on	<ul style="list-style-type: none"> There is too much ice Ice Maker may need to be cleaned 	<ul style="list-style-type: none"> Remove ice from bin to resume production Remove the obstruction on ice spout inside or clean the inside wall of the ice bin. Please refer to Cleaning & Maintenance page 8.
Making Ice too slowly	<ul style="list-style-type: none"> Hot air outlet has been blocked by something Water temperature in inner tank is too high 	<ul style="list-style-type: none"> Position icemaker more than 4" (10cm) of ventilation distance Water temperature requirement between 45°-90°F (7°-32° C)
Water leakage	<ul style="list-style-type: none"> Drain plug not in place, or is not pushed up under unit Water reservoir may be overfilled Water reservoir inlet may be clogged 	<ul style="list-style-type: none"> Secure drain plug in place under unit Drain some, or all of the water, as instructed and only fill to below the max line Please refer to Cleaning & Maintenance page 8.

SPECIFICATIONS

Model K3026SS

Description of product **Soft Nugget Ice Maker**
 Model **K3026SS**
 Voltage/Frequency **120V AC / 60Hz**
 Current **2.0A MAX**
 Color **Stainless/Gray**

Ice storage capacity **1.76 lbs. (800g)**
 Ice making rate **50 lbs. per day**
 Dimensions (WDH) **9.6" x 12.5" x 12.6"**
 (Width/Depth/Height)

Installation clearance **4 inches (10cm)**
 (sides and back)
 Operating environment **55°F - 90°F**
 Weight (when empty) **27.5 lbs**

TERMS AND CONDITIONS

Limited End User Warranty

Kell Electronic USA, Inc., (the "Company") warrants that their products (the "Product") are free of defects in material and workmanship for a period of ONE YEAR (the "Warranty Period") from the date of purchase by end user. In the event that the Product qualifies for coverage under this warranty, the Company at its option and at no charge may either repair or replace the Product (not including, shipping, handling, delivery or installation) with an identical product or product having similar features and functionality as determined by the Company. The Company does not warranty the installation, maintenance, or service of its Product. The Company is not responsible for ancillary equipment not supplied by the Company, which is attached to or used in connection with the Company's Product, or for the operation of the Product with any ancillary equipment, and all such equipment and operation of such equipment with the Product, is expressly excluded from this limited warranty. Furthermore, the Company shall not be responsible for any damage to the Product resulting from the use or operation of the ancillary equipment not furnished by the Company for use with the Product.

The Company extends this limited warranty only to the original end-user. This limited warranty and the remedies hereunder are limited to Products properly used, maintained, stored, installed and used for their intended purpose and use only, in accordance with the Company instructions. This warranty shall not apply to Product installed, operated or maintained in or under abnormal conditions. This warranty is not applicable to any Product, which is not operated and/or installed in accordance with the Company's specifications and or industry practices and standards. This warranty does not extend to any battery power supply included in/with the Product.

This warranty also does not extend to the purchase of opened, used, repaired, repackaged and/or resealed products, including but not limited to sale of such products on Internet auctions sites and/or sales of such products by surplus, bulk or unauthorized resellers.

Any and all warranties or guarantees shall immediately cease and terminate as to any products or parts thereof which are repaired, replaced, altered, or modified, without the prior express and written permission of the Company.

This warranty sets forth all of the Company's responsibilities for the Product.

THIS WARRANTY IS GIVEN IN LIEU OF ALL OTHER EXPRESS WARRANTIES. IMPLIED WARRANTIES, STATUTORY OR OTHERWISE, INCLUDING BUT NOT LIMITED TO ANY IMPLIED WARRANTIES OF MERCHANTABILITY OR FITNESS FOR A PARTICULAR PURPOSE, ARE LIMITED TO THE DURATION OF THIS LIMITED WARRANTY. IN NO EVENT, INCLUDING WITHOUT LIMITATION, IN CONTRACT, TORT, STRICT LIABILITY OR WARRANTY, SHALL THE COMPANY BE LIABLE TO THE PURCHASER OR TO ANY THIRD PARTY, FOR ANY DAMAGES OR FOR ANY LOSS OF USE, LOSS OF TIME, LOSS OF LIFE, INCONVENIENCE, COMMERCIAL LOSS, LOST PROFITS OR SAVINGS OR INCIDENTAL, CONSEQUENTIAL OR SPECIAL DAMAGES ARISING OUT OF THE USE OR INABILITY TO USE SUCH PRODUCT. TO THE FULL EXTENT THAT SUCH MAY BE DISCLAIMED BY LAW, COMPANY'S SOLE LIABILITY SHALL BE TO REPLACE OR REPAIR THE PRODUCT.



WARNING: Cancer or other reproductive harm.

For more information go to www.P65Warnings.ca.gov



Kell Cares About You!

If you need assistance, please email **CUSTOMER SUPPORT** at **info@kellelectronic.com** or call 1-888-858-9100

PersonalChiller.com



PLEASE RECYCLE

Facilities may not exist in your area.

MADE IN CHINA

Distributed by Kell Electronic USA Inc., Houston, TX

©2023 Kell Electronic USA Inc. All rights reserved.

Personal Chiller is a registered trademark of Kell Electronic USA Inc. Other product names, brand names, and company names may be trademarks or designations of their respective owners. Due to continued product improvements, the product shown on may differ slightly from actual product purchased.